



Product Specification

Chemical Name: Dichloro(1,2-bisdiphenylphosphinoethane) Palladium (II)

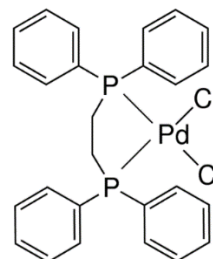
CMI Product Code: 5092

CAS Number: 19978-61-1

Formula: $\text{Pd}[(\text{C}_6\text{H}_5)_2\text{PC}_2\text{H}_4\text{P}(\text{C}_6\text{H}_5)_2]\text{Cl}_2$

Formula Weight: 575.76 g/mol

Theoretical Pd %: 18.5%



PARAMETER

SPECIFICATION

Pd Assay	18.5 ± 0.5%
Chemical Purity	> 98% (based on Carbon %)
Microanalysis :	Carbon: 54.2 ± 1.1% Hydrogen: 4.21 ± 0.5%
Infrared Spectrum	Conforms to Structure
Appearance	Off-White to dark yellow powder
Storage	Store at < 4°C in a tightly closed container

Reviewing Chemist: Dr. Bryan Frauhiger, Ph.D., Organometallic Technical Director: BEF

Specification Approval: Dr. Ernest Addo, Ph.D., Director of Quality & Analytical Testing: EA

Specification Revision Date: February 22nd, 2016

Revision Level: 0

Colonial Metals warrants, that at the time of product release this product conformed to the information contained on this specification sheet. Purchaser must determine the suitability of the product for its particular use.

Colonial Metals, Inc. 505 Blue Ball Rd. Bldg. 20 Triumph Industrial Park Elkton, MD 21921 USA

Website: www.colonialmetals.com, Telephone: (410)-398-7200, Facsimile: (410) 398-2918