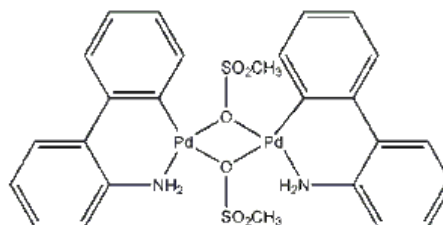


Product Specification

Chemical Name: (2'-Amino-1,1'-biphenyl-2-yl)methanesulfonatopalladium(II) dimer
CMI Product Code: 5130
CAS Number: 1435520-65-2
Formula: C₂₆H₂₆N₂O₆Pd₂S₂
Formula Weight: 739.45 g/mol
Theoretical Pd %: 28.8%



PARAMETER	SPECIFICATION
Pd Assay	28.8 ± 0.6%
Chemical Purity	> 98.0% (based on carbon %)
Microanalysis :	Carbon: 42.2 ± 0.8%
Infrared Spectrum	Conforms to structure
Appearance	White to off-white powder
Storage	Store under inert gas in a tightly sealed container. Store cold ≤ 2°C.

Reviewing Chemist: Dr. Bryan Frauhiger, Ph.D., Organometallic Technical Director: BEF
Specification Approval: Dr. Ernest Addo, Ph.D., Director of Quality & Analytical Testing: EA
Specification Revision Date: February 22nd, 2016
Revision Level: 0

Colonial Metals warrants, that at the time of product release this product conformed to the information contained on this specification sheet. Purchaser must determine the suitability of the product for its particular use.